

How to Make a Bee Stick

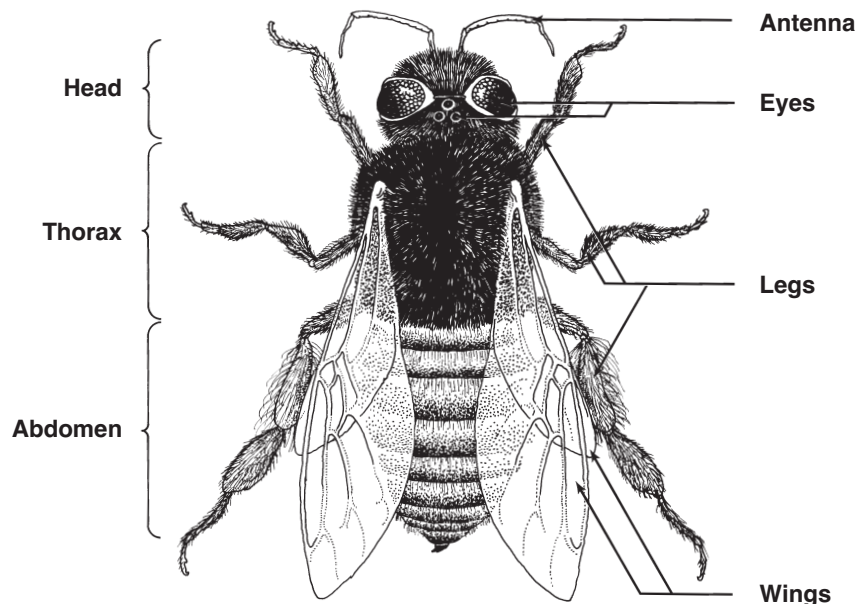
Activity Sheet 4

Name: _____

Date: _____

1. Check off each item on the supply list to be sure you have everything you need before beginning.
- | | |
|-------------------------|---------------------------------|
| _____ 1 dried bee | _____ 1 cup of glue (for table) |
| _____ 1 toothpick | _____ 1 hand lens |
| _____ 1 pair of forceps | _____ 1 cup (for table) |
2. Observe the bee with the hand lens. Turn the bee over. Find the place where the legs are attached.
3. Put a very small drop of glue on one end of the toothpick.
4. Glue the underside of the bee (where the legs are) to the toothpick. Make sure the head is at the end.
5. Let the glue dry for a few minutes. Be careful that the bee does not slip down the stick.
6. Now, take the time to really observe the bee closely. How many body parts can you find? Check off each one.

Note: Some bees may be damaged and not have all parts. Ask a classmate to share if your bee is not complete.



7. Push the bee stick into the bottom of an upside-down paper cup. There is one cup for each table. Leave the cup at your table. Your teacher will store the cups.
8. Place all supplies neatly on the tray in the center of your table.